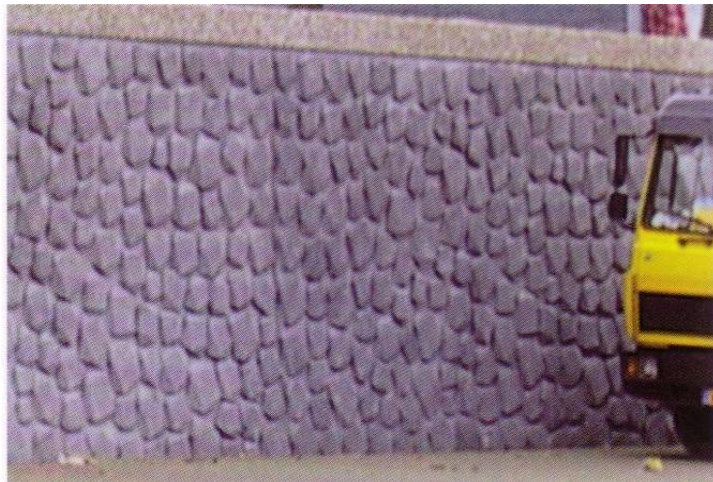


# NOEplast





# Exterior application



Masoury design

Pattern: Kufstein (564900)

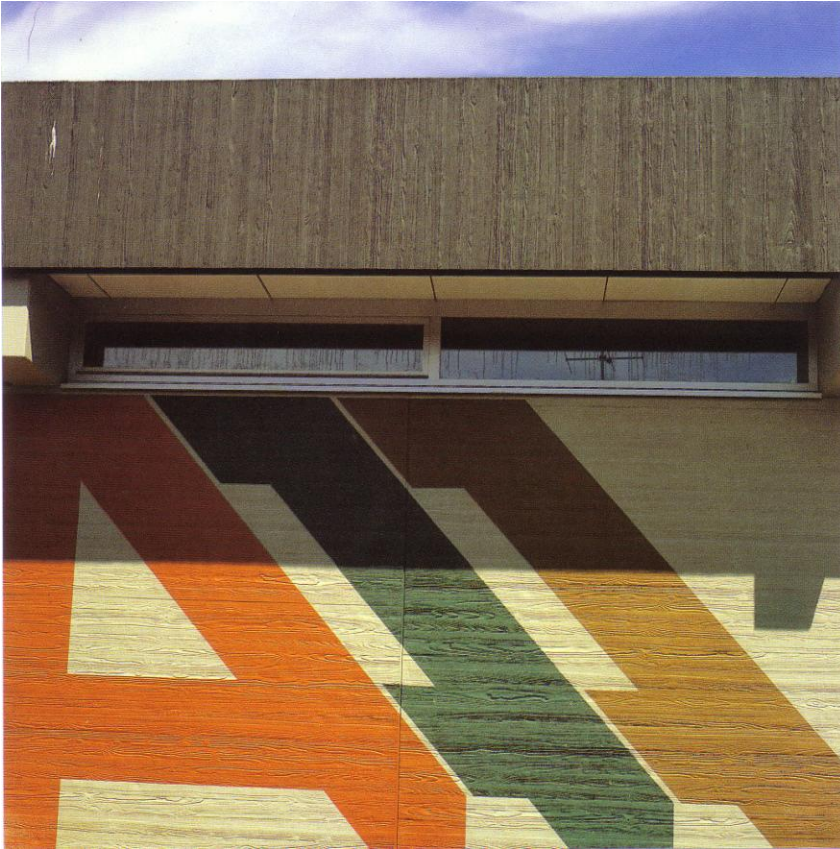


Straight design

Pattern: Brussel (563400)



# Exterior application



Timber design

Pattern: Freiburg (560100)



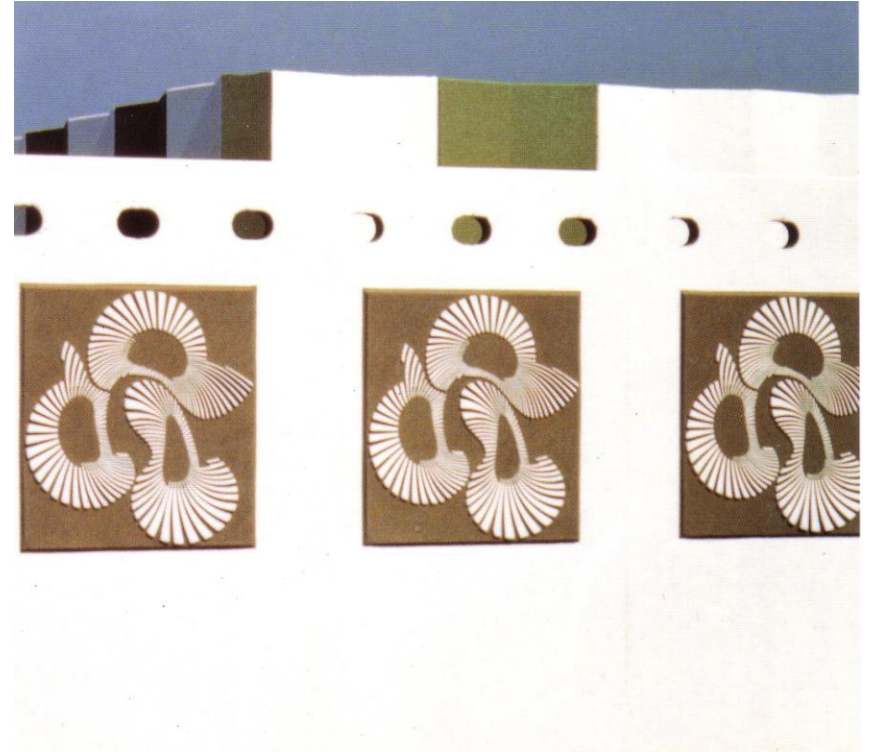
Straight design

Pattern: Lyon (561900)

# Exterior application



Masoury design  
Pattern: Berlin (562700)



Graphic design  
Pattern: Dynografia (562300)



# Interior application



Timber design  
Pattern: Biberach (5600000)



Special Liverpool II for  
Shek Kip Mei Phase I

# Flooring application



Anti-slip design  
Pattern: Antirutsch | ( 568200 )



# Use of NOEplast formliner



- ❖ Create textured concrete surfaces with an appealing aesthetic finish.
- ❖ Add warmth to a wall or building through the varying interplay of light and shade.
- ❖ The visual effects change throughout the sharp contrasts of deep profiles and the softer, more subtle shades of shallow pattern.
- ❖ Possibility to produce of large areas of aesthetic, uniformly textured concrete with an almost infinite variety of standard patterns plus the added ability to create purpose-made individual design.
- ❖ Unique in offering designers a creative medium in formed concrete.
- ❖ Equally effective for cast in-situ concrete or for pre-cast elements such as parapets, beams, columns walling, copings etc
- ❖ The flexibility of the liners curved surfaces present no difficulty.
- ❖ Formliners can be used many times, the ability to conceal irregularities and surface imperfections in both colour and finish of cast concrete.

# Fixing of texture formliner



- ✓ Can be cut to size using either a trimming knife for thin mats or a circular saw with a coarse blade
- ✓ With care in positioning joint marks are hardly visible on the finished concrete.
- ✓ When liners are used in horizontal moulds they are simply cut to size and placed in the mould.
- ✓ Abutting edges can be secured adhesive tape or stuck to a ply backing with NOE Adhesive.
- ✓ The edges of thin liners are sometimes held down with fillets bedded on thin foam to prevent grout leakage.
- ✓ Thickness mats are simply fitted flush against the sides of the mould.
- ✓ Mats which are frequently used may require retrimming.



# Formliner arrangement on formwork



Project: YL / 46 / 99  
Tin Shui Wai Further Development Road D3 and Construction Wetland  
Pattern: Artistic design – Liverpool (561800)

# Vertical joint



- ✓ When casting large areas it may be necessary to butt two or more mats side by side.
- ✓ Continuity of the pattern can generally be achieved by matching the corresponding points of the design.
- ✓ However, with some NOEplast designs it may be advisable to provide a dummy joint.



# Horizontal joints



- ✓ With few exception liners are supplied in sufficient length to accommodate uninterrupted, full-height pours.
- ✓ Where horizontal joints cannot be avoided it is often advisable to accentuated the joint by forming a recess in the concrete.

# Formwork cleaning



- ✓ The textured formliners must be dust-free and dry before applying the release agent

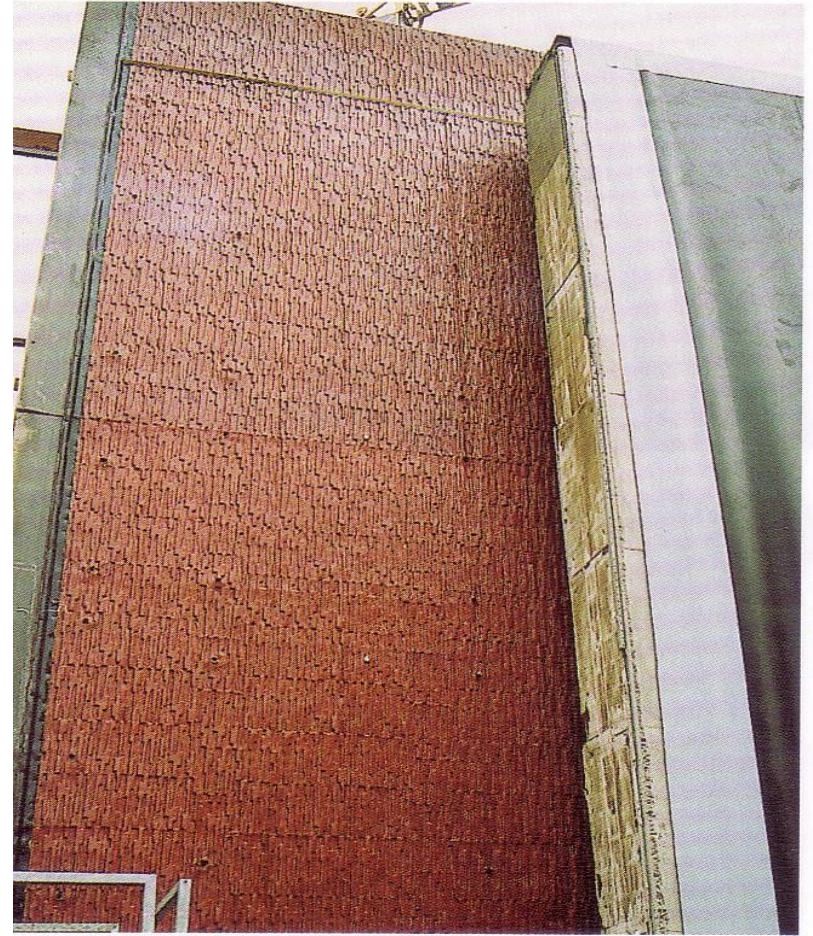


# Formwork arrangement





# Liner for structure

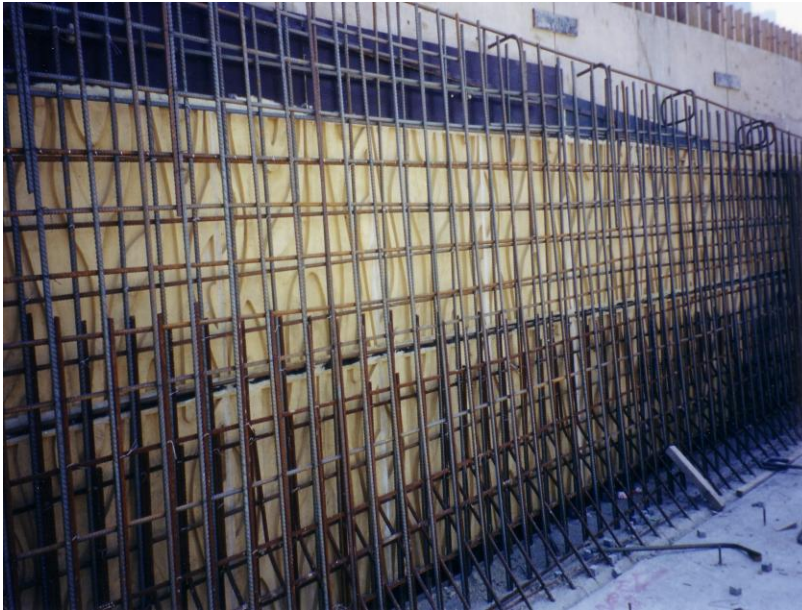




# Formwork set up



# Preparation



- ✓ Before placing the reinforcement, release agent should be thinly applied to the liner
- ✓ Any excess release agent should be carefully removed. This is particularly important after spray application



# Formwork remove after concreting grouting



Project: HY/ 2000/ 18 – Kam Tin Bypass

Pattern: Masoury design – Zyklus (560300)

# Pre-cast panel





# Pre-cast panel Installation





# Inspection after concrete finish





# Concrete finishing



# Artistic design Liverpool (561800) for R.E Wall





Artistic design  
Boston ( 560600) for Pre-cast panel





Artistic design  
Buffalo ( 561100) for Noise barrier





# Timber design Hong Kong (569150) for Noise barrier



# Masoury design Zyklop ( 560300) for HY/ 2000/ 18 Kam Tin Bypass



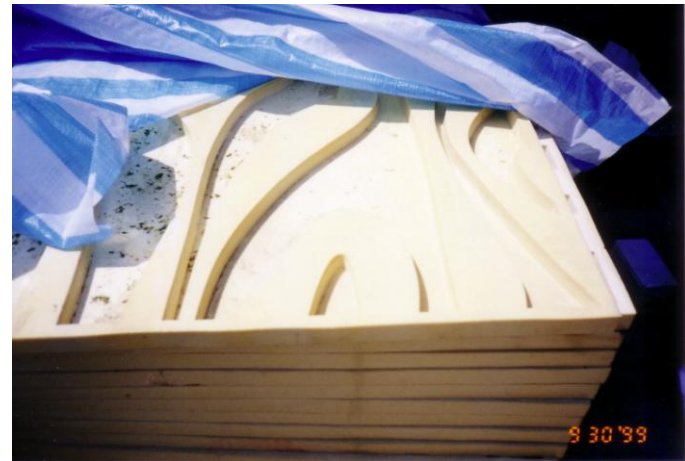
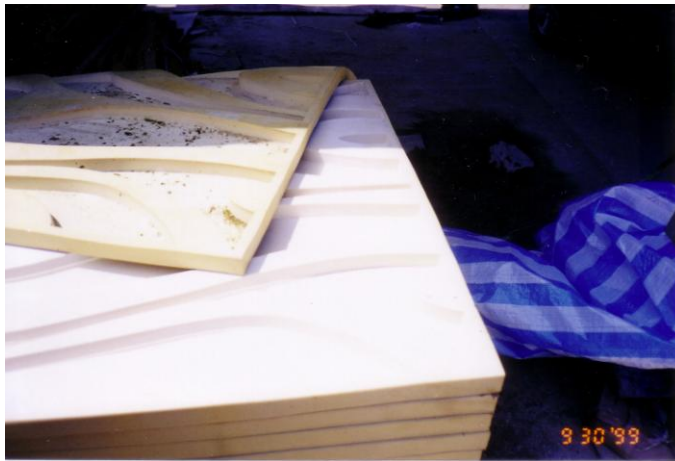


# Packing



- ❖ Small loose liner will be packed in bundle
- ❖ Large loose liner will be packed in wooden crate or pallet
- ❖ Adhesive and release agent packed by separate carton box

# Storage



- ❖ Should be stored flat.
- ❖ They are – in spite of their elastic characteristics - Not sensitive to excessive mechanical stress
- ❖ Do not kink or fold the mats
- ❖ The form liner must be protected from weather if they are stored or not used for long periods.



# Special Adhesive ( 5695|0)



- ❖ Container: 4.6 kg per can
- ❖ Components: A + B
- ❖ Rate: 600 gram per 1 square meter
- ❖ Used for fixing liner to timber, plastic-faced or steel forms
- ❖ It is essential to ensure that both the back of the liner and the face of the form are clean, dry and free from grease (Observe safety precautions!)
- ❖ At the time of use this adhesive should not be at a temperature below +15°C
- ❖ With care the liners can be detached from the forms for subsequent re-use

# Release Agent ( 569730 )



- ❖ Container: 5 litre per can
- ❖ Rate: 1 litre for 25 square meter
- ❖ Apply before laying the reinforcement on the NOEplast form liner
- ❖ Ensure release agent can build up firmly on the form liner surface
- ❖ Apply evenly on all sides especially in the case of deep structure
- ❖ Any excess release agent should be carefully removed. This is particularly important after spray application.
- ❖ With care the liners can be detached from the forms for subsequent re-use



# Accessories

